

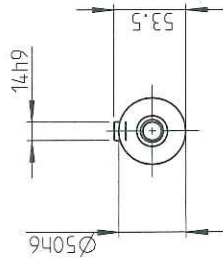
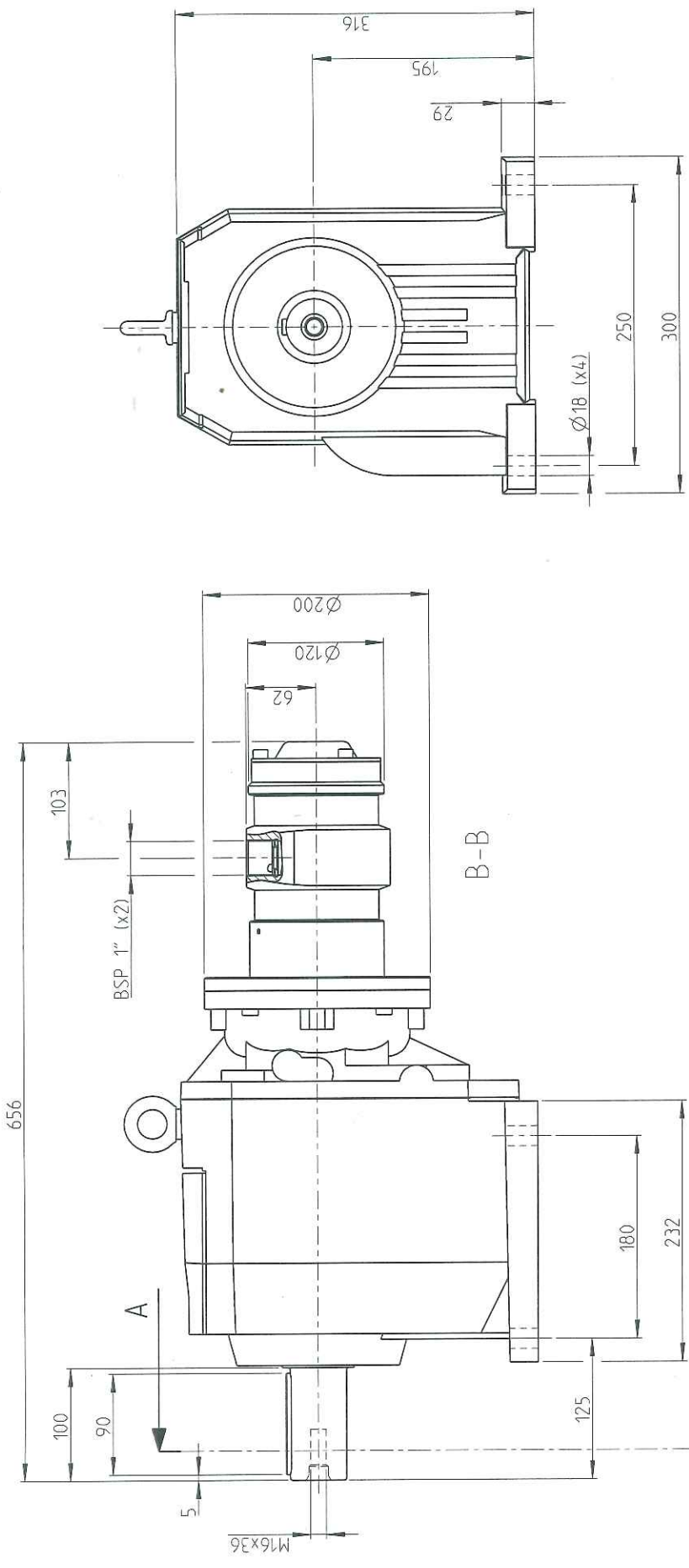
Technical Specifications of Air Motor

S.N.	Specification	Details	Qty
1.	Make	Atlas Copco	01 No.
2.	Model	LZL25-BF613-A-165	
3.	Operating pressure	6.3 bar	
4.	Max power	3.2 kW	
5.	Torque at max power	1768.8 Nm	
6.	Speed at max power	17 rpm	
7.	Air consumption at max power	86.3 l/s	
8.	Minimum starting torque	2754 Nm	
9.	Stall torque	3537.6 Nm	
10.	Free speed	36 rpm	
11.	Weight	77 kg	
12.	Type	Restricted	
13.	Direction of rotation	Bidirectional	
14.	Mounting	Foot mounted	
15.	Certificate	ATEX Certified	

Alkain
16/11/2021

1 2 3 4 5 6 7 8

REV	0.1	DATE	
REV	0.1	DATE	



MOTOR NAME	ORDERING NO.
LZL25-BF613-A-059	8411 1812 44
LZL25-BF613-A-0114	8411 1812 69
LZL25-BF613-A-165	8411 1812 85

Tolerances, if not indicated, according to: AC-STD		Secretary class	
Name: LZL25-BF613-A		1102 K/-	
Material		CAD Pro/E	
Scale: 1:4	Format: A3	Compare	Drawing owner: T00
Drawn: F GRINELL	Blank	Replaces	
Cons-class: 1295 K/-	Rev: 0	Status: Design	Sheet 1 of 1
Mass/Volume	Date: 2013-05-30	Designation: LZL25-BF613-A	

Note Pos.	Modified from	Date	Intr.
0	-	-	-

Atlas Copco air motor selection program

MOTOR ALTERNATIVE:

LZL25-BF613-A-165 8411 1812 85

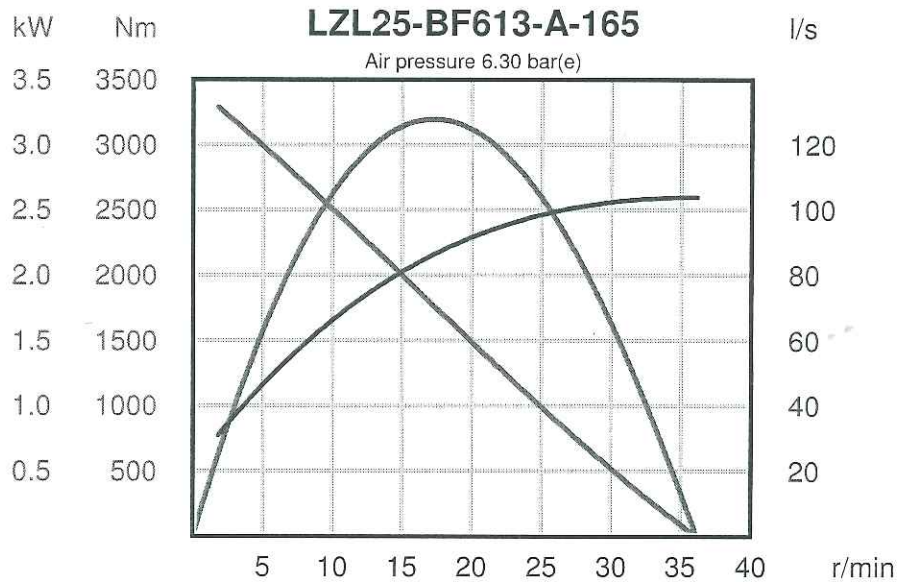
Motor condition: Non regulated
6.30 bar(e)

Max power	[kW]	3.20
Torque at max power	[Nm]	1768.8
Speed at max power	[min ⁻¹]	17
Air consump. at max power	[l/s]	86.3
Min starting torque	[Nm]	2754.0
Stall torque	[Nm]	3537.6
Free speed	[min ⁻¹]	36
Weight	[kg]	77.0

 Class

Performance curves:

Non regulated
6.3 bar(e)



Dimensional drawings (mm):

