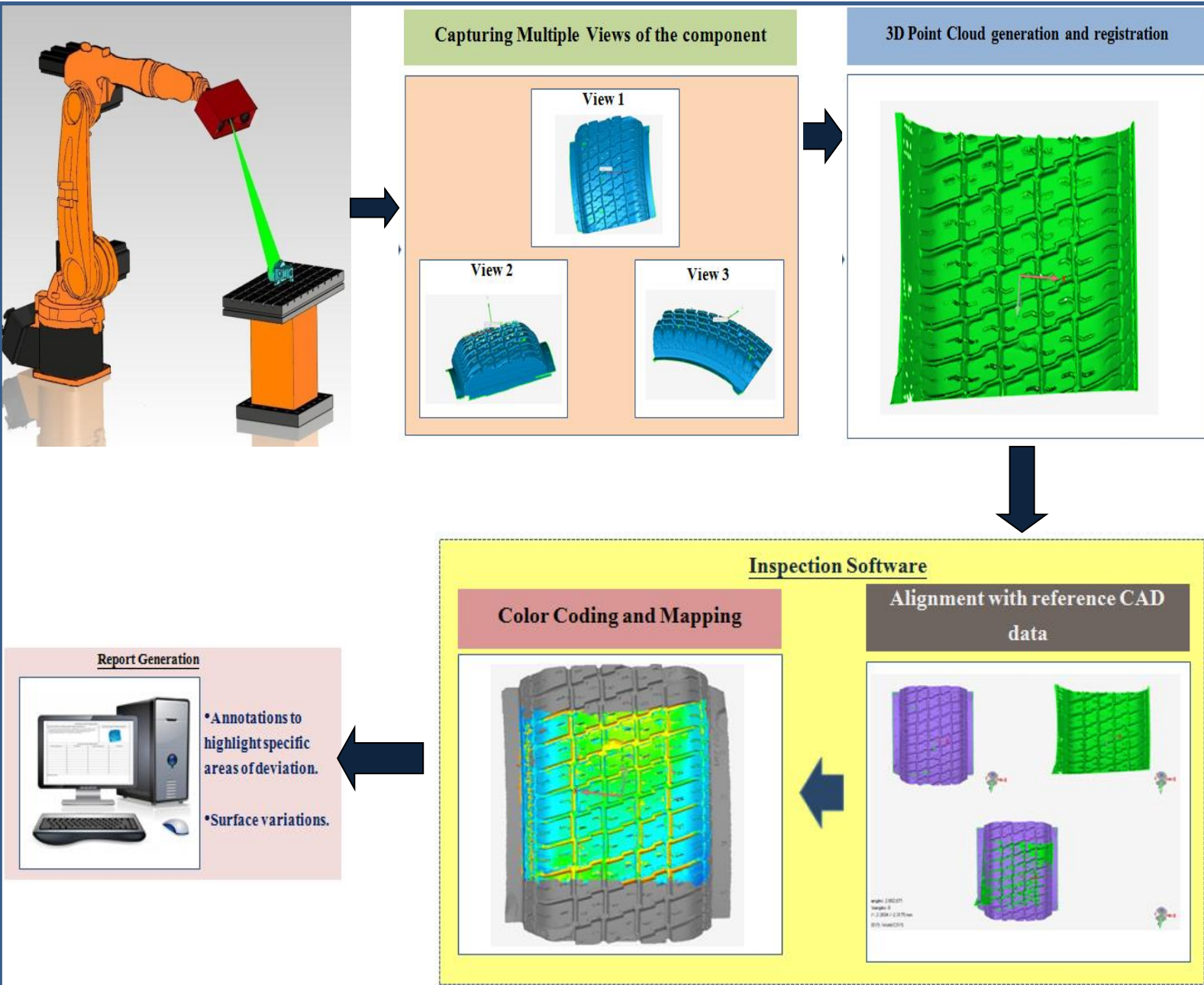




Hand-held Laser Scanner

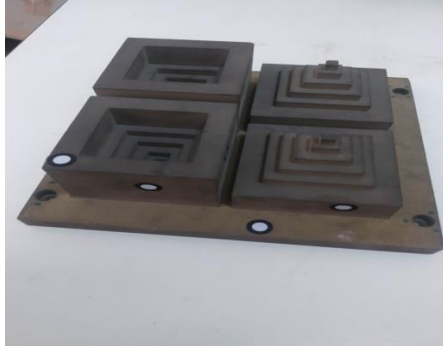
Scanning By Digital Pattern Projection



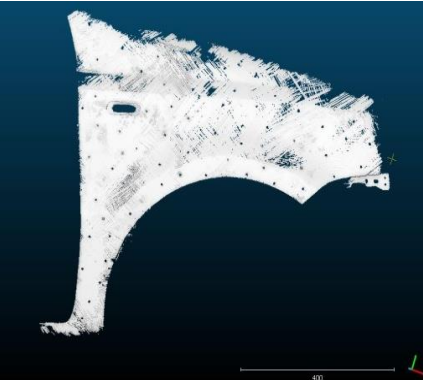
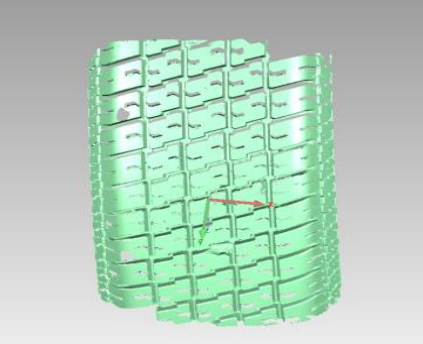
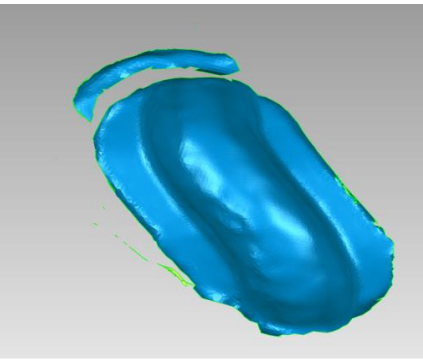
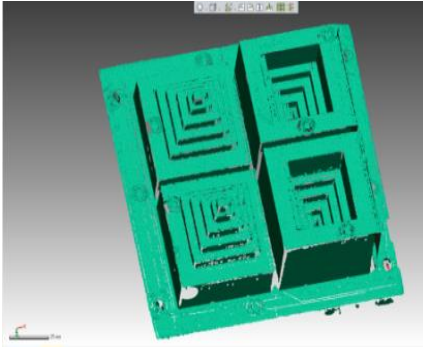
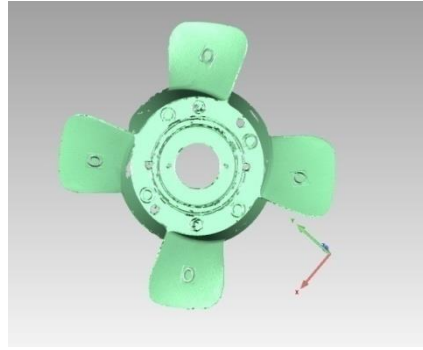
Optical Tracker

3D Scanning Technologies

Sample Images



3D Point Clouds



Technical Specifications

Digital Pattern Projection Scanner

Sl. No.	Parameter	Specifications
01.	Working Volume	240 x 210 x 100 mm ³
02.	Points per scan	4 million points
03.	Light source	Projector
04.	Output data format	STL
05.	Multi-view registration	Available with marker based, optical tracker and robot based methods

Hand-Held Laser Scanner

Sl. No.	Parameter	Specifications
01.	Scanning area	275 x 250 mm ²
02.	Light source	Red laser
03.	Pattern	2 laser lines
04.	Laser class	2M (Eye safe)
05.	Registration	Available with marker based and optical tracker methods
06.	Weight	1.5 kg

Optical Tracker

Sl. No.	Parameter	Specifications
01.	Working volume	900 x 900 x 720 mm ³
02.	Technology	IR optical tracking

Applications

Reverse engineering

Automotive applications

Medical applications

Aerospace

Jewelry, archaeology, etc.

Contact details

Ms. Kusuma N., Center Head & Sc-E, C-SVT
Email ID : kusuma@cmti.res.in
Mobile Ph : +91 9449842664

Ms. Deepa R., Group Head & Sc-D, Vision Technology
Email ID : deepa@cmti.res.in
Mobile Ph : +91 9449842664