

Non-Contact Inspection Solutions for Precise Measurements in 2D or 3D, Defect Identification, In-line Inspection, Label Check and other applications.



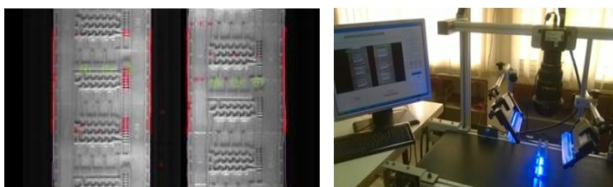
Thread Measurement System TMS-030

Non-contact, high speed and improved method of external thread parameter measurement to check if the dimensions of the thread are within prescribed tolerances.

Measurement of Major diameter, minor diameter, pitch diameter, pitch, flank angle. Optionally, more measurement features like root-to-crest height, root radius, lead angle, trailing angle etc can also be added.

Measuring range of ϕ 30 mm with an accuracy of $\pm 10 \mu\text{m}$.

Expertise in Design Of Inspection Hardware and Development of Application Software to Meet Industry Requirements.



Automated Inspection Of Drippers

Detection of blocked holes, root flash & collar flash, broken edges, circularity of top and bottom sections.

Inspection rate of 600 p/ min.



Fluted Roller Vision Inspection System

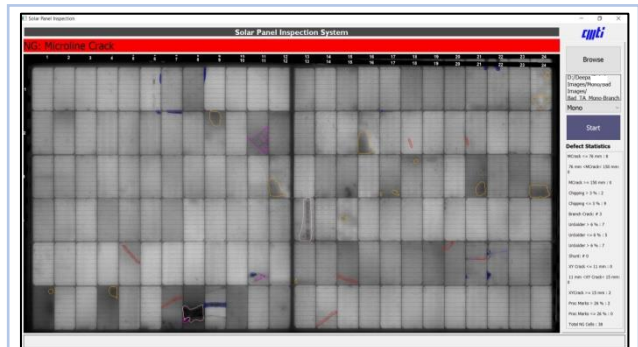
Inspection of fluted roller for presence of chip-out and damages at before plating stage

8 models of rollers with lengths from 587 to 640 mm

2 vision systems capturing 72 images per roller

Software Features of Auto Inspection Cycle, Manual Inspection Cycle, Summary Analysis and Detailed Reporting, Model Type Detection, Wrong Loading Detection.

Expertise in Providing Reliable Solutions for Challenging Inspection Requirements.



AI Based Solar Panel Inspection

Defect detection, characterization and location marking.

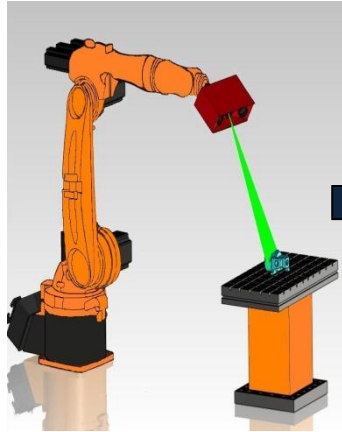
User defined dynamic inspection criteria.

Inspection report with detailed defect statistics.

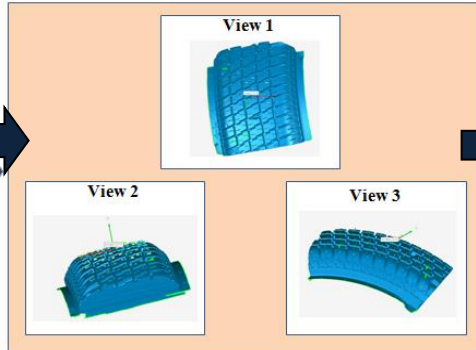
Cycle time of 4 Seconds/ panel.

Option to train new panels.

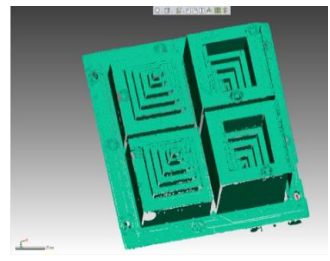
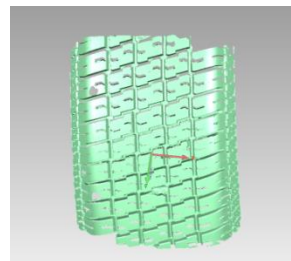
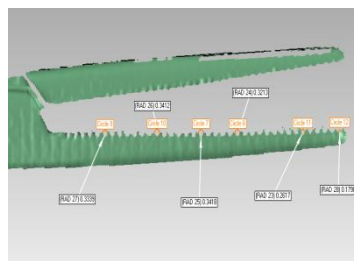
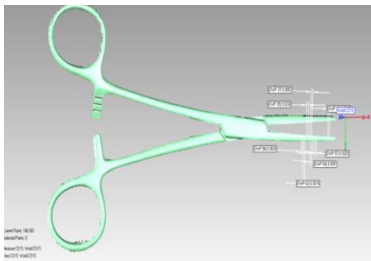
Experience in Developing Cutting Edge Inspection Technologies.



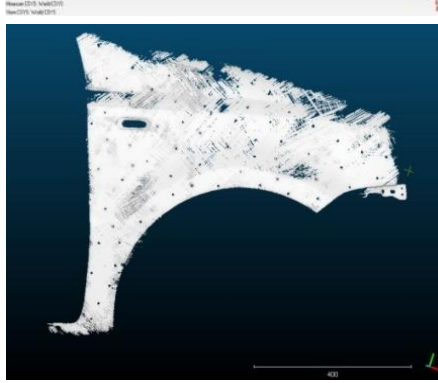
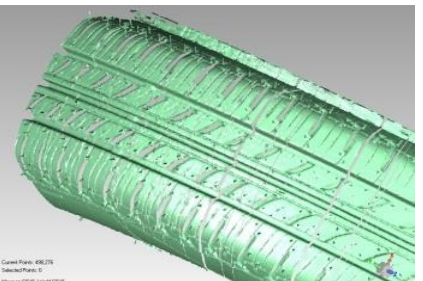
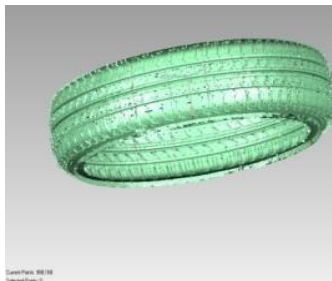
Capturing Multiple Views of the component



3D Point Cloud generation and registration



Digital Fringe Projection Scanning for Complete Point Cloud Generation and Modeling



Static and Hand-Held Laser Scanner

Contact Details

Deepa. R
Group Head (Vision Tech.)
E-mail: deepa@cmti.res.in
Phone: +91-08-22188329

Kusuma. N
Center Head – C-SVT
E-mail: kusuma@cmti.res.in
Phone: +91-08-22188349
Mob: +91-9449842664

Machine Vision Laboratory

